



**TRACEY**  
CONCRETE

FenCast **ttt**  
NI/ROI<sub>v1.1</sub>

## Fencing Brochure

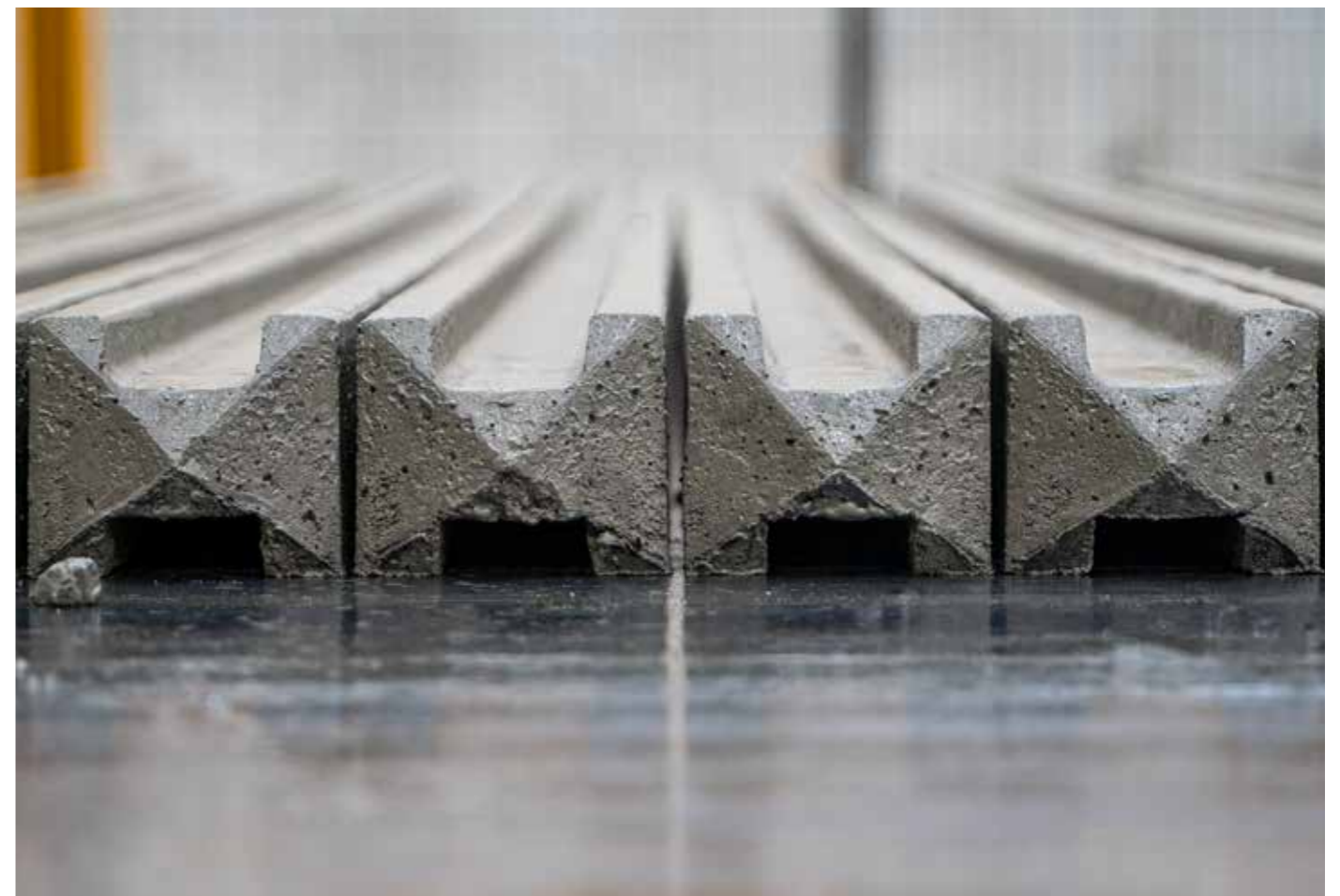
DESIGNING | MANUFACTURING | DELIVERING

[traceyconcrete.com](http://traceyconcrete.com)



# Contents

Introduction	4
Our Story	5
Our Production Facilities	6 - 7
Fencing - FenCast	8 - 9
Gravel Boards	10 - 11
Drycast Concrete & Guide to Products	12 - 13
Installation Guide & Innovation	14 - 15



Tracey Concrete is one of the largest precast concrete manufacturers in the UK and Ireland.

Tracey Concrete's success has been built on the consistent quality of our products, efficient delivery and outstanding customer service. With our vast experience and expertise in the construction industry, we have been able to design and supply precast concrete products for some of the biggest projects in the UK and Ireland.

Our products comply with all necessary certifications and are accredited with the most up to date Irish, UK and European standards, with the relevant products being BSI kitemarked and CE marked.

**WE SPECIALISE IN**

- Precast Concrete Drainage Systems
- Precast Tunnelling Systems
- Agricultural Precast
- Cable Trough Systems
- Ready-mix and Liquid Screed Concrete
- Bespoke Precast Concrete Systems
- Bio Klenze™ Sewage Treatment Systems
- Quarry Products



# Our Story

Tracey's began as a family-run contracting business in the early 1960's installing water-mains throughout Northern Ireland. In the 1970's, Tracey Concrete Ltd was formed as a readymix concrete supplier to the public.

Over the years, the company expanded into new product ranges manufacturing precast concrete cills & lintels and agricultural cattle slats. In the 1980's, the business expanded into precast drainage product's manufacturing concrete pipes and manhole rings becoming a leading precast drainage supplier in Ireland.

In 2003, Tracey Concrete entered the UK market supplying projects in England, Scotland and Wales. Tracey Concrete are now a leading supplier of Precast Concrete throughout the UK and Ireland.



Tracey Readymix Lorry 1970's



Tracey Concrete's Precast Factory - Enniskillen



Tracey Concrete's Precast Factory - Stanton

# Tracey Concrete's Production Facilities



## 1. ENNISKILLEN

Tracey Concrete Enniskillen is our head office and main production facility where the business was founded. The company started in the 1960's as a readymix plant supplying local construction & agricultural projects. Over the years it has grown in size and now the site spans over 50 acres which includes a state of the art precast concrete factory, precast stock and loading yard and 2 readymix batching plants.



## 2. BELCOO



In 2018, Tracey Concrete acquired the expansive 200-acre Belcoo Quarry only 9 miles from Enniskillen. Our vision for the site has materialised into a thriving production factory producing precast drainage & fencing products. The quarry is our source of raw materials where we produce our sand & stone. We are committed to enhancing its sustainability by introducing renewable energy sources, such as a wind farm, to power our operations.

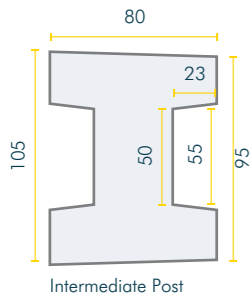
## 3. STANTON

Acquired in 2023, Tracey Concrete Stanton is strategically situated in the heart of England, nestled in Stanton by Dale, Derbyshire. This expansive production facility has effectively doubled our production capacity, enabling us to better cater to the UK drainage market through swifter deliveries and increased output capabilities. The site has space for expansion and we plan to build new factories and add new modern machines to continue to expand and grow.



## INTERMEDIATE POSTS

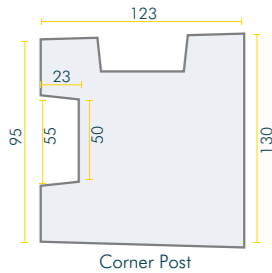
Product Code	Sizes (mm)	Sizes (ft)	No. Per Tonne	No. Per Pack	Individual Weight	Pack Weight incl. Packaging
SLPI2440	2440	8'	22.39	30	44.7	1360
SLPI2745	2745	9'	18.99	30	52.7	1600



Intermediate posts are essential for providing structural support and stability to fences, preventing sagging and ensuring security. They also determine spacing, allowing for uniformity in appearance and supporting taller fence installations, contributing to their overall longevity and versatility.

## CORNER POSTS

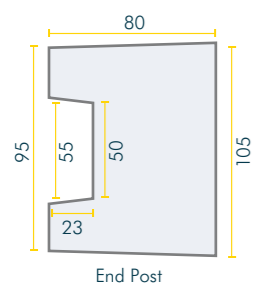
Product Code	Sizes (mm)	Sizes (ft)	No. Per Tonne	No. Per Pack	Individual Weight	Pack Weight incl. Packaging
SLPC2440	2440	8'	22.39	30	44.7	480
SLPC2745	2745	9'	18.99	30	52.7	547



Corner posts are strategically placed at fence line turns to anchor and support the fence, while intermediate posts are evenly spaced along the fence length, providing stability and maintaining panel spacing.

## END POSTS

Product Code	Sizes (mm)	Sizes (ft)	No. Per Tonne	No. Per Pack	Individual Weight	Pack Weight incl. Packaging
SLPE2440	2440	8'	20.12	10	49.7	517
SLPE2745	2745	9'	17.83	10	56.1	518



End posts are used at the ends of a fence row or line to securely anchor and conclude the fence. They prevent the fence from extending beyond its intended boundary, defining property limits effectively and ensuring the fence remains intact.

Precast concrete posts offer a longer-lasting alternative to wooden fence posts. Tracey Concretes range includes: slotted posts (also called H posts) plain and recessed gravel boards (also called concrete fence panels).



Tracey Concrete's precast concrete fencing products are easy to install, durable and provide an attractive finish in combination with timber fencing panels. Tracey Concrete can deliver our fencing products to Ireland & the UK, they are stocked at our depot in Belcoo, County Fermanagh & in our Stanton facility in Ilkeston, Derbyshire.



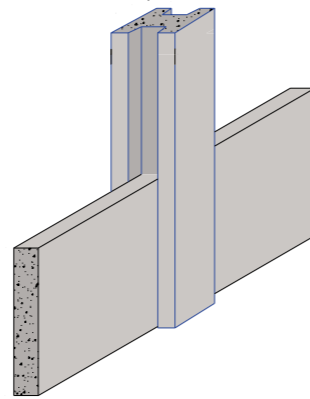
# GRAVEL BOARDS

Drycast concrete gravel boards are a long term cost effective method of improving the longevity of your fence panels. Easy to install, concrete gravel boards raise your fence panels off the ground, helping to reduce the risk of moisture damage such as rot and decay that would otherwise be caused by damp or wet ground.

Concrete gravel boards can be used with both slotted concrete fence posts (by simply slotting them into place), and with traditional wooden fence posts with the addition of gravel board brackets. As well as protecting your fence panels, concrete gravel boards add overall rigidity to your fence and help hold your fence panels in place.

## Advantages

- Durable alternative to wood
- Rot and maintenance-free
- Quick and easy to install
- Dry Cast concrete provides a smooth finish with minimal surface bubbles

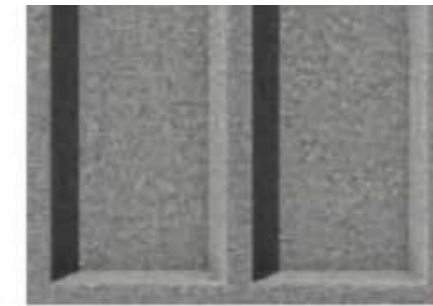


# GRAVEL BOARDS

Product Code	Finish	Sizes (mm)	Depth (inches)	No. Per Tonne	No. Per Pack	Individual Weight (kg)	Pack Weight incl. Packaging (kg)
GBPI0150	Plain	1800x150x45	6"	36.10	40	27.7	1120
GBPI0305	Plain	1800x305x45	12"	17.17	20	58.3	1180
GBRI0150	Recessed	1800x150x45	6"	37.56	40	26.6	1080
GBRI0305	Recessed	1800x305x45	12"	21.62	20	46.3	940



**PLAIN- FACE**



**RECESSED**



**ROCKFACE** (Coming Soon)



# DRY CAST CONCRETE: THE SUPERIOR CHOICE FOR PRECAST PRODUCTS

# GUIDE FOR PRODUCT MANAGEMENT

## UNMATCHED DURABILITY AND STRENGTH

Dry cast concrete is renowned for its increased production efficiency and rapid strength gain. With a low water-to-cement ratio, dry cast concrete achieves high early strength, allowing for faster utilisation in construction.

## AESTHETIC APPEAL

While wetcast concrete is often chosen for its smooth finish, dry cast concrete can also provide a pleasing aesthetic with its clean lines and precise edges. It's an excellent choice for projects where both form and function are important.

## VERSATILITY IN APPLICATION

Dry cast concrete is perfect for a variety of precast products, including H posts, slotted posts, and gravel boards. Its zero-slump nature makes it ideal for items that require high dimensional accuracy and structural integrity.

## ENVIRONMENTAL ADVANTAGES

With a lower water-cement ratio, dry cast concrete is a more sustainable option. It requires less water and energy to produce, reducing the environmental footprint of your precast concrete products.



Tracey Concrete's precast fencing items are methodically arranged and safely secured on wooden pallets. For the posts, wooden laths are placed between each layer for added protection. Every product is firmly bound with our eco-friendly plastic strapping, which is produced entirely from recycled materials.



Large stocks of our complete range of precast fencing products are readily available at our Belcoo facility and in Derby at Stanton. This ensures that we can quickly fulfill orders of any size, providing efficient and reliable service to our customers.



## MARKING THE FENCE LINE

- Use a string to mark the straight fence line
- Mark the position of each post along fence line

## DIGGING THE POST HOLES

- Dig the holes for the fence posts. Each hole should be 600mm deep
- Add 3-4 inches of gravel to the bottom of each hole for drainage

## SETTING THE FENCE POSTS

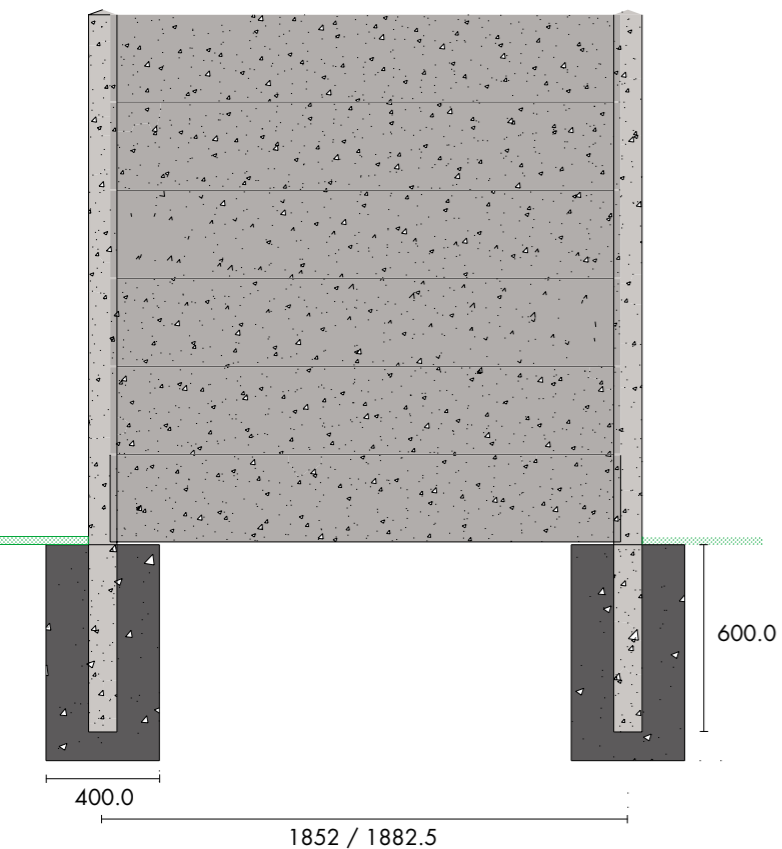
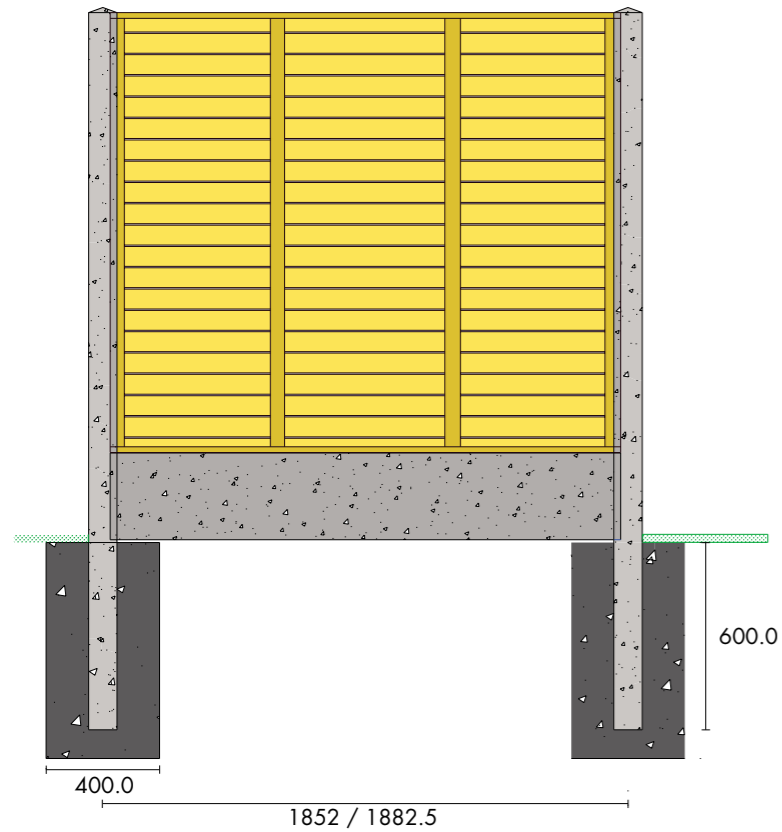
- Place the first post in the hole and use a spirit level to ensure it's vertical
- Fill the hole with a fast-setting concrete mix and allow it to set

## INSTALLING GRAVEL BOARDS

- Slide the gravel boards into the H slots at the bottom of each post
- Ensure the gravel boards are level and fully seated in the slots

## ATTACHING FENCE PANELS

- Slide the fence panels into the H slots above the gravel boards
- The panels should fit snugly between the posts. If necessary, secure them with screws.



Tracey Concrete has embraced cutting-edge automation with the integration of robotics into our production line, enhancing manual handling and streamlining the creation of our fencing products. As a company we are commitment to innovation, ensuring precision and efficiency in meeting the needs of our customers.





**Tracey Concrete Limited**  
Old Rossorry, Sligo Road  
Enniskillen, Co. Fermanagh  
BT74 7LF

**Belcoo Quarry**  
Greenahoe Road, Belcoo  
Co. Fermanagh  
BT93 5HD

**Tracey Concrete Stanton**  
Littlewell Lane  
Ilkeston, Derby  
DE7 4QW

**TELEPHONE**  
01159441448 / 028 6632 6437

**EMAIL**  
headoffice@traceyconcrete.com

[traceyconcrete.com](http://traceyconcrete.com)



ISO 9001:2015  
Quality Management

ISO 14001:2015  
Environmental Management

OHSAS 18001  
Occupational Health and Safety Management

