



TRACEY
CONCRETE

PERFECT 

BASE

Perfect Base

THE FUTURE OF MANHOLE CONSTRUCTION

traceyconcrete.com



The Tracey Concrete Perfect Base™ is a custom-made watertight monolithic benched concrete base.

The Perfect Base™ allows Tracey Concrete to manufacture any practical channel inlet/outlet configuration. Inlets are possible at every angle from 90 degrees to 270 degrees from outlet.

The extra flexibility of the Perfect Base™ therefore allows for bespoke base design.

All Perfect bases™ are individual, custom-made to exact site requirements.

Tracey Concrete's large production facilities allow for swift manufacture & delivery to site just days after order.

- Fast Installation
- Safe Installation
- Economical
- Available in DN1200,1500,1800 & 2100mm
- Any Inlet/Outlet Angle
- Complete Take-off Service
- Wide Wall - No concrete surround required
- No on-site benching needed
- Less exposure to silica dust - No cutting inlets
- BSI Kitemarked

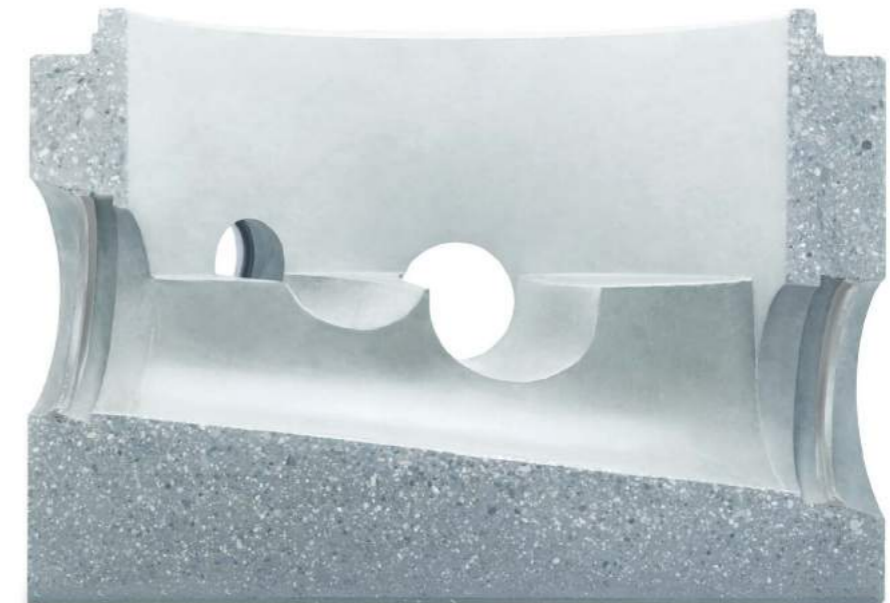


Advantages

Perfect Base – The Future of Manhole Construction

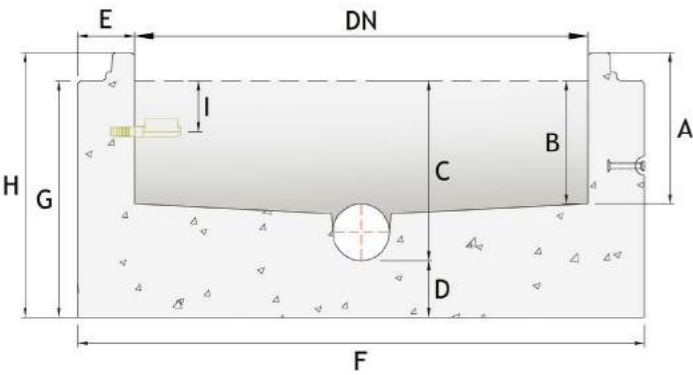
Perfect Base™ – The Future of Manhole Construction

- **Every Angle:**
Each Perfect Base™ can be manufactured with **limitless channel configurations**
- **Custom Connections:**
Manufactured with integrated couplers to suit any pipe type
- **Take-off Service:**
Bases manufactured to CAD site drawings
- **Simple Installation:**
Certified lifting shackles can be provided for safe and easy installation
- **Low Carbon Footprint:**
40-45% more environmentally friendly than traditional methods
- **Access:**
Double steps or ladder rungs available
- **Custom Design:**
Available with custom inlet/outlet & crown/invert configuration
- **Waterproof System:**
The combination of a thicker wall and rubber joint ensures a watertight structure
- **Efficiency:**
Installation times significantly shorter than traditional methods
- **Design Life:**
120 years
- **Quality:**
Complies with BS EN 1917 and BS 5911-3
Accepted by major water companies and is included in Sewers for Adoption

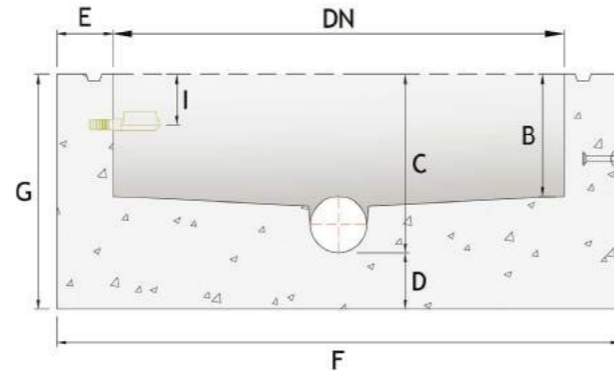


PERFECT BASE SPECIFICATIONS

Watertight Joint



Tongue & Groove Joint



Note: Sealant strip is required for Tongue & Groove installation

PERFECT BASE / DN1200

Inlet/Outlet Diameter	A	B	C	D	E	F	G	H	I	Approx Weight (KG)
100	400	325	475	150	150	1500	625	700	125	1710
100	300	225	375	150	150	1500	525	600	125	1550
100	200	125	275	150	150	1500	425	500	125	1400
100	100	25	175	150	150	1500	325	400	125	1250
150	400	325	475	150	150	1500	625	700	125	1710
150	300	225	375	150	150	1500	525	600	125	1550
150	200	125	275	150	150	1500	425	500	125	1400
150	100	25	175	150	150	1500	325	400	125	1250
225	400	325	575	150	150	1500	725	800	125	2020
225	300	225	475	150	150	1500	625	700	125	1870
225	200	125	375	150	150	1500	525	600	125	1710
300	400	325	625	150	150	1500	775	850	125	2150
300	300	225	525	150	150	1500	675	750	125	2000
300	400	325	625	150	190	1580	775	850	125	2450
300	300	225	525	150	190	1580	675	750	125	2240
375	400	325	625	150	190	1580	775	850	125	2550
375	300	225	525	150	190	1580	675	750	125	2750
450	400	325	625	150	260	1720	775	850	125	3450
450	300	225	525	150	260	1720	675	750	125	3750

Dimensions may vary depending on type of pipe used. Core Height (A) can be adjusted in 50mm intervals



t.028 6632 6437

PERFECT BASE SPECIFICATIONS

PERFECT BASE / DN1500

Inlet/Outlet Diameter	A	B	C	D	E	F	G	H	I	Approx Weight (KG)
375	500	415	815	200	230	1960	1015	1100	175	5000
375	400	315	715	200	230	1960	915	1000	175	4700
375	300	215	615	200	230	1960	815	900	175	4400
450	500	415	915	200	230	1960	1115	1200	175	5390
450	400	315	815	200	230	1960	1015	1100	175	5090
450	300	215	715	200	230	1960	915	1000	175	4790
450	200	115	615	200	230	1960	815	900	175	4490
525	500	415	915	200	230	1960	1115	1200	175	5390
525	400	315	815	200	230	1960	1015	1100	175	5090
525	300	215	715	200	230	1960	915	1000	175	4790
600	500	415	915	200	230	1960	1115	1200	175	5390
600	400	315	815	200	230	1960	1015	1100	175	5090
675	900	815	1315	200	320	2140	1515	1600	175	8050
675	800	715	1215	200	320	2140	1415	1500	175	7600

Dimensions may vary depending on type of pipe used. Core Height (A) can be adjusted in 50mm intervals

PERFECT BASE / DN1800

Inlet/Outlet Diameter	B	C	D	E	F	G	I	Approx Weight (KG)
675	900	1400	200	300	2400	1600	125	10180
675	800	1300	200	300	2400	1500	125	9700
675	700	1200	200	300	2400	1400	125	9230
675	600	1100	200	300	2400	1300	125	8750
750	900	1400	200	300	2400	1600	125	9970
750	800	1300	200	300	2400	1500	125	9490
750	700	1200	200	300	2400	1400	125	9020
750	600	1100	200	300	2400	1300	125	8540
900	900	1400	200	300	2400	1600	125	9780
900	800	1300	200	300	2400	1500	125	9310
900	700	1200	200	300	2400	1400	125	8830
1050	900	1400	200	300	2400	1600	125	8900

Dimensions may vary depending on type of pipe used. Note: DN1800 Base only available in T&G Option. Smaller diameter pipe may be used with smaller core heights.

PERFECT BASE / DN2100 -



traceyconcrete.com 5

PERFECT BASE ORDER FORM

CUSTOMER DETAILS

Customer Name:

Job Details/Address:

Site Contact Name:

Site Contact Tel:

BASE DETAILS

Customer Order No:

Perfect Base Ref:

Site Ref:

PERFECT BASE SPECIFICATION TABLE

Manhole Joint Type (please tick) Watertight Tongue & Groove
 Manhole Size (please tick) 1200 1500 1800

	<i>Example</i>	Outlet = T	Inlet 1	Inlet 2	Inlet 3	Inlet 4	Inlet 5
Angle	172°	0°					
Pipe Size (ID)	225mm						
Pipe Type	Hepworth SS						
Pipe Code	SP060/5						
Pipe Gradient	2.5%						
Fall to Outlet	22mm	N/A					

Signed: _____

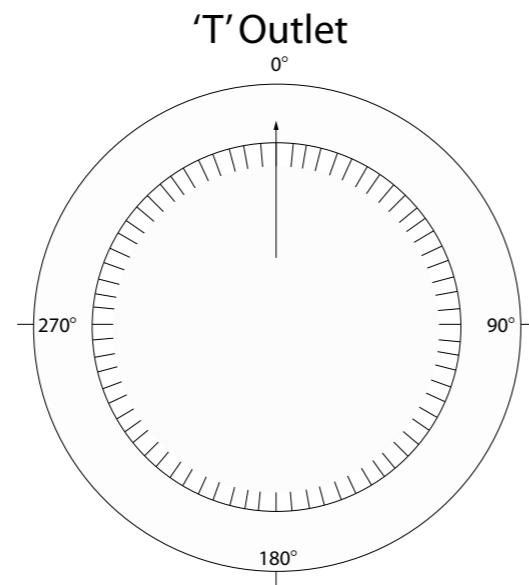
Date: _____

Please email completed form(s) to headoffice@traceyconcrete.com



Please use the Perfect Clock Diagram & Specification Table below to order a Perfect Base

1. The Outlet is 'T'
2. Inlets available in any combination from 90° to 270° (any degree)
3. Angles outside the parameters of 90° to 270° are available on request
4. If double steps/rungs are required mark location on the clock diagram below "S"
5. One completed form is required per Perfect Base
6. Standard fall of 20mm



Please illustrate inlet channels & double steps/rungs (if required) on the clock diagram above

PERFECT BASE LIFTING GUIDE



All Tracey Concrete Perfect Bases are manufactured with spherical lift head anchors cast in.

Base Size	Lifting Shackle
1200mm	3No. 2.5 Tonne
1500mm	3No. 5 Tonne
1800mm	3No. 10 Tonne

The lift head shackle should be fitted in accordance with the manufacturers recommendations with the extended tab pointed in the direction of the lift.

Both 2.5 & 5 Tonne lift head shackles can be supplied by Tracey Concrete if required.

Tracey Concrete recommend that each shackle should be lifted with a suitably rated duplex web sling to avoid chains contacting the Perfect Base.



Anchor lifting point



Lift head shackle



PERFECT 

BASE



Tracey Concrete Limited

Old Rossorry, Sligo Road
Enniskillen, Co. Fermanagh
BT74 7LF

TELEPHONE

028 6632 6437

EMAIL

headoffice@traceyconcrete.com

traceyconcrete.com

